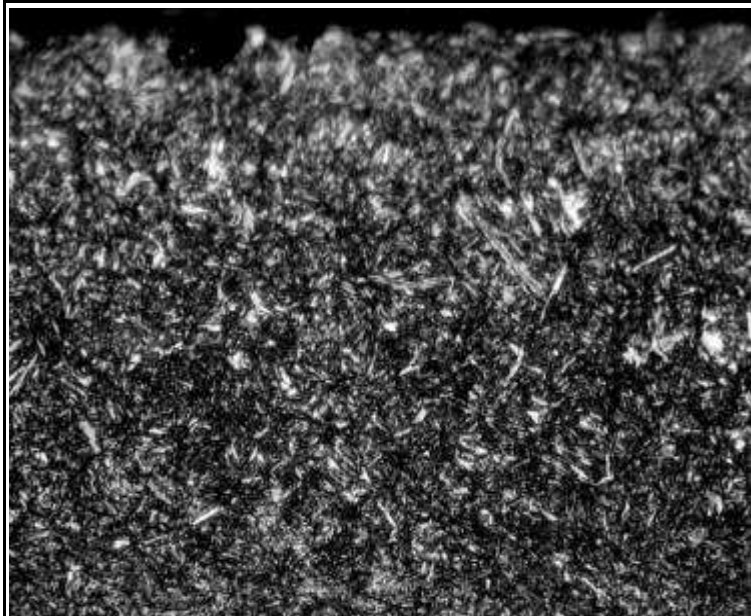
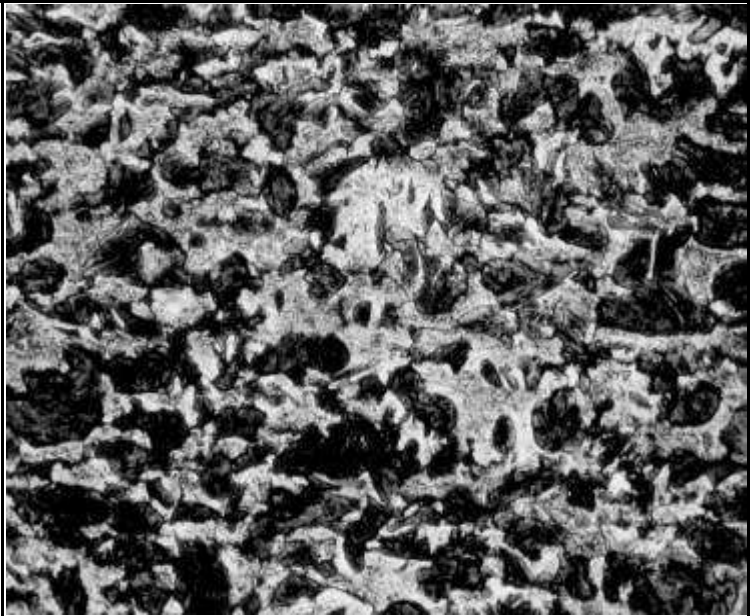


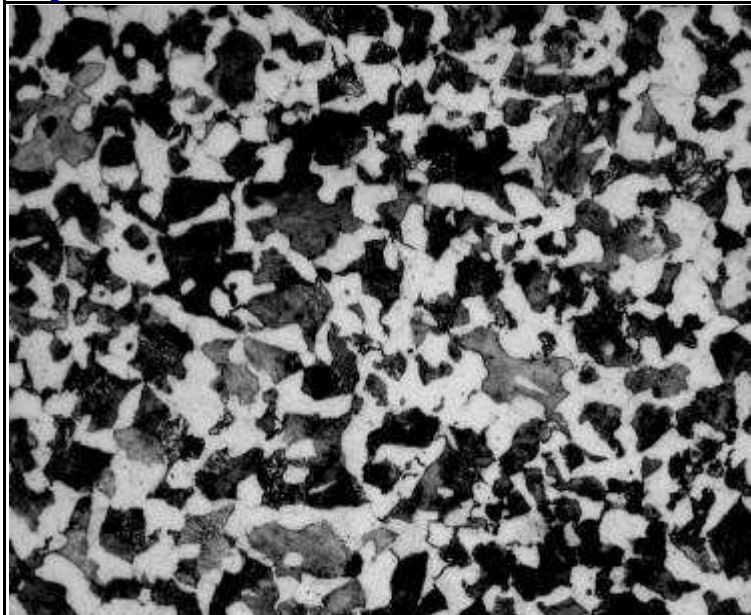
金相图片



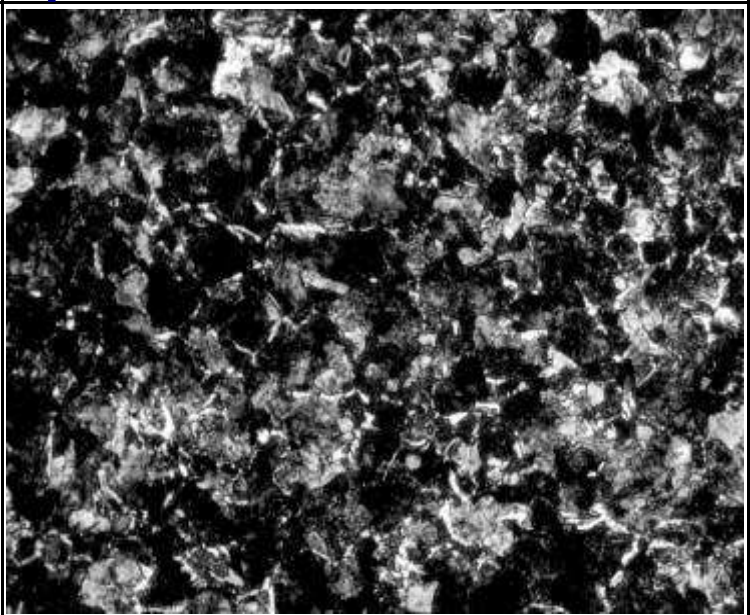
20# (400X) 表面渗碳马氏体+残余奥氏体



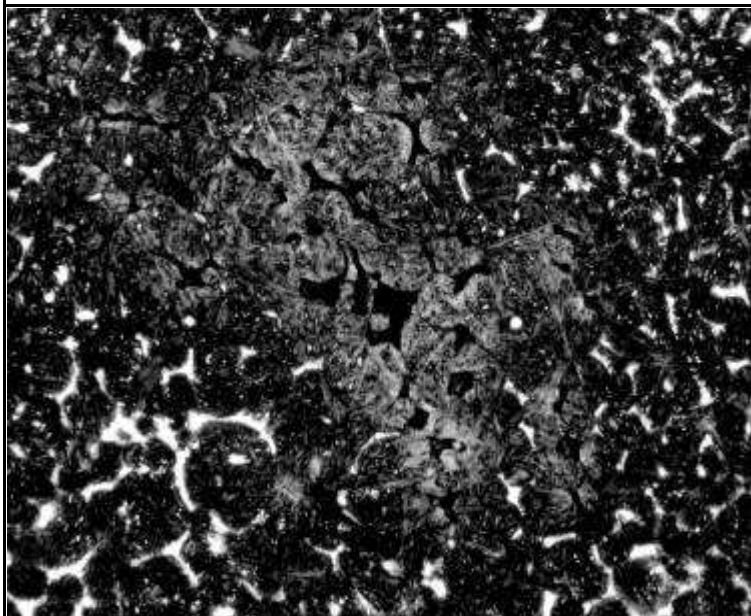
20# (400X) 心部铁素体+珠光体



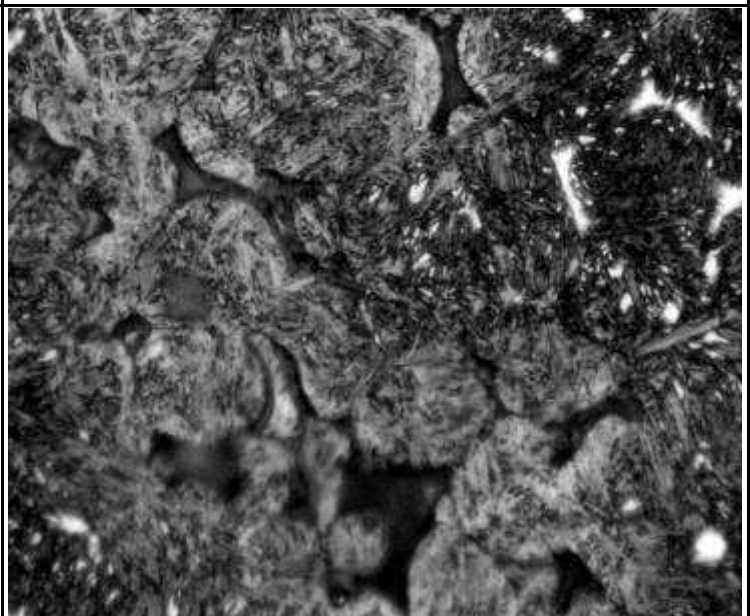
S45C (400X) 正火组织



S45C (400X) 淬火不良、心部网状铁素体



Gr15 (400X) 晶粒粗大、晶界过烧



Gr15 (1000X) 晶粒粗大、晶界过烧

